

## 910-960nm High Power Partial Reflective Faraday Mirror

### FEATURES

- High Isolation
- Low Insertion Loss
- Epoxy-Free Optical Path
- Low Polarization Sensitivity
- Low Profile Packaging

### APPLICATIONS

- Fiber Optic Amplifiers
- Sensing Systems
- Telecommunication Networks
- CATV Networks
- LAN Systems

### SPECIFICATIONS

Parameter	Unit	Value	
Center Wavelength (CW)	nm	915, 930, 940, 950	
Bandwidth	nm	+/-10	
Excess Loss (Max.)	dB	≤1.8	
Nominal Reflective Ratio	%	1±0.5, 2±0.4, 5±1, 10±2, 50±8, 80, 90	
Faraday Rotation Angle (Single Pass)	Deg	45, 90	
Rotation Angle Tolerance (CW, 23°C)	Deg	≤+/-5	
Faraday Position	Forward Type	-	
	Backward Type	-	
		Faraday is before the Mirror	
		Faraday is after the Mirror	
PDL (for SM Fiber Type)	dB	≤0.20	
Extinction Ratio (for PM Fiber Type)	dB	≥18	
Fiber Type	SM Fiber Type	-	
		HI780 Fiber, 780-HP Fiber(7), HI1060 Fiber or 10/125um SC Fiber (E)	
		10/125um DC Fiber (O), 15/130um DC Fiber (W)	
			20/130um DC Fiber (Q) or 25/250um DC Fiber (R)
	PM Fiber Type	-	
		PM850 Fiber, PM780-HP Fiber(7), PM980 Fiber or PM1060L Fiber (E)	
10/125um PMDC Fiber (O) or 15/130um PMDC Fiber (W)			
		20/130um PMDC Fiber (Q) or 25/250um PMDC Fiber (R)	
Fiber Tensile Load	N	5	
Max. Optical Power (CW)	W	0.3, 0.5, 1, 2, 3, 5, 10, 15, 20, 30, 40, 50, 60, 80, 100	
Operating Temperature	°C	0~50	
Storage Temperature	°C	-20~75	

**Note:** 1. Specifications are for device without connectors; Specifications may change without notice.

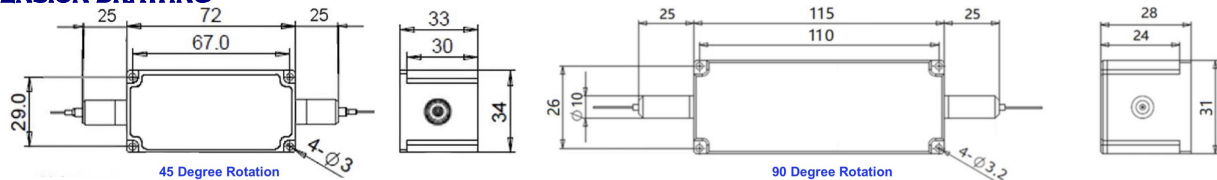
2. To add connectors, IL is 0.7dB higher, RL is 5dB lower, ER is 2dB Lower, Connector key is aligned to slow axis.

3. Only guarantee 1W continuous wave (CW) power thru testing for connectors added.

4. Devices for higher optical power or with other type fiber or consigned fiber are also available; Devices can only work in the core of the Double Cladding (DC) Fiber, Cladding Power must be stripped before connecting the device.

5. Package size may be different for different rotation angle, fiber type and optical power.

### DIMENSION DRAWING



### ORDERING INFORMATION (PN)

Center Wavelength	Ref. Ratio	Rotation Angle	Faraday	Input Fiber	Output Fiber	Optical Power	Fiber Type	Fiber Sleeve	Fiber Length	Connector Type
915-915nm	01-1%	90-90degree	Position	S=SM Fiber	S=SM Fiber	03-300mW	H=HI1060 or PM980 Fiber	B= Bare Fiber	05=0.5m	N=Without Connector
930-930nm	10-10%	Blank for 45degree	B=Backward	P= PM Fiber	P= PM Fiber	1-1W	E=10/125 SC or PM1060L Fiber	L= Loose Tube	10=1.0m	FC/APC=FC/APC Connector
940-940nm	50-50%		Blank for Forward			5-5W	R=25/250 DC or PMDC Fiber	2= 2mm Cable	15=1.5m	LC/PC=LC/PC Connector
950-950nm	80-80%					10-10W	Blank for HI780 or PM850 Fiber	3= 3mm Cable	20=2.0m	SC/UPC=SC/UPC Connector

