

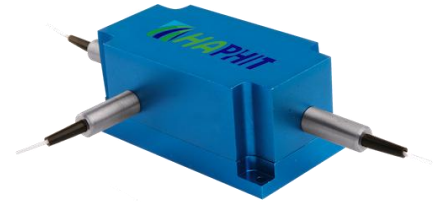
## 750~890nm 3-port Multimode Optical Circulator

### FEATURES

- High Isolation
- Low Insertion Loss
- Epoxy-Free Optical Path
- High Reliability and Stability
- Low Profile Packaging

### APPLICATIONS

- Fiber Optic Amplifiers
- Fiber Optic Instruments
- WDM Systems
- Dispersion Compensation
- Light Routing

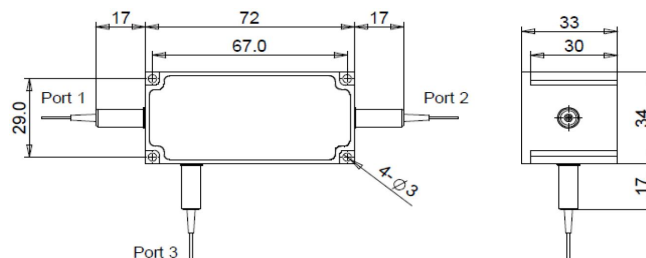


### SPECIFICATIONS

Parameter	Unit	Value	
Working Wavelength	nm	750±10, 780±10, 793±10, 808±10, 830±10, 850±10, 880±10, 890±10	
Insertion Loss@23°C	(Typ.)	dB	1.5
	(Max.)	dB	2.0
Isolation@23°C	(Typ.)	dB	22
	(Min.)	dB	18
Optical Return Loss	dB	≥25	
Cross Talk	dB	≥25	
Fiber Type	-	50/125um MM Fiber (OM2) or 62.5/125um MM Fiber (OM1) 50/125um OM3 MM Fiber (3) or 50/125um OM4 MM Fiber (4)	
Fiber Tensile Load	N	5	
Maximum Optical Power (CW)	W	0.3, 0.5, 1, 2, 3, 5, 10, 15, 20	
Operating Temperature	°C	0~50	
Storage Temperature	°C	-20~75	

- Note:**
- Specifications are for device without connectors; Specifications may change without notice.
  - To add connectors, IL is 0.3dB higher, RL is 10dB lower.
  - Specifications are tested at low order modes.
  - Only guarantee 1W continuous wave (CW) power thru testing for connectors added.
  - Devices for higher optical power or with other type fiber or consigned fiber are also available.
  - Package may be different for different fiber type and optical power.

### PACKAGE DIMENSION



### ORDERING INFORMATION (PN)

FMCR-	NNN	-3HP NN	- (NN)	- C	C	NN	- CC/CCC
Center Wavelength	Optical Power	Optical Power P2	Fiber Type	Fiber Sleeve	Fiber Length	Connector Type	
750-750nm	03- 300mW	1- 1W	5- 50/125um MM Fiber	B- Bare fiber	05-0.5m	N-Without Connector	
793-793nm	1- 1 Watts	2- 2W	6- 62.5/125um MM Fiber	L- Loose Tube	10-1.0m	FC/APC=FC/APC Connector	
808-808nm	3- 3 Watts	5-5W	3- OM3 MM Fiber	2-2mm Cable	15-1.5m	LC/PC=LC/PC Connector	
880-880nm	10- 10 Watts	Blank for P2-P1	4- OM4 MM Fiber	3-3mm Cable	20-2.0m	SC/UPC=SC/UPC Connector	