

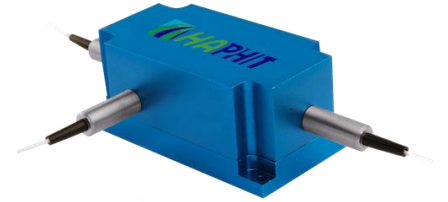
1040nm High Power 3-port PM Circulator for Pulse Power

FEATURES

- High Isolation
- Low Insertion Loss
- Epoxy-Free Optical Path
- High Reliability and Stability
- Low Profile Packaging

APPLICATIONS

- Fiber Optic Amplifiers
- Fiber Optic Instruments
- WDM Systems
- Dispersion Compensation
- Light Routing

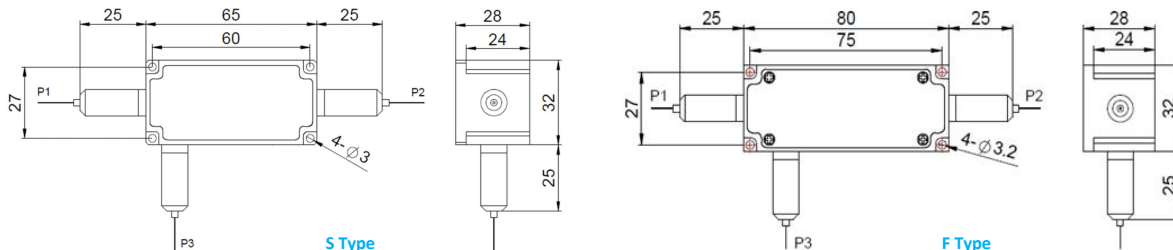


SPECIFICATIONS

Parameter	Unit	Value
Center Wavelength	nm	1040
Operating Wavelength Range	nm	+/-10
Insertion Loss@ 23 °C (1→2 or 2→3)	(Typ.) (Max.) dB	0.8 1.6
Isolation @ 23 °C (3→2 or 2→1)	(Typ.) (Min.) dB	23 20
Work Mode	S Type	-
	F Type	-
		Can only work in slow axis
		Can work both in slow axis and fast axis
Optical Return Loss	dB	≥45
Extinction Ratio	dB	18
Fiber Type		PM980 Fiber, PM1060L Fiber (E) or PM1060L-FA Fiber (L)
		10/125um PMDC Fiber (O) or 15/130um PMDC Fiber (W)
		20/130um PMDC Fiber (Q) or 25/250um PMDC Fiber (R)
Fiber Tensile Load	N	5
Max. Average Optical Power	W	0.5, 1, 2, 3, 5, 10, 15, 20, 25, 30
Max. Peak Power for pulse	kW	0.1, 1, 2, 3, 5, 10, 15, 20
Operating Temperature	°C	0~50
Storage Temperature	°C	-10~65

- Note:**
1. Specifications are for device without connectors; Specifications may change without notice.
 2. To add connectors, IL is 0.5dB higher, RL is 5dB lower, ER is 2dB Lower, Connector key is aligned to slow axis.
 3. Only guarantee 1W continuous wave (CW) power thru testing for connectors added.
 4. Devices for higher optical power or with other type fiber or consigned fiber are also available; Devices can only work in the core of Double Cladding (DC) Fiber, Cladding Power must be stripped before connecting the device.
 5. Package size maybe different for different fiber type, optical power, etc.

PACKAGE DIMENSION



ORDERING INFORMATION (PN)

FPCR-	NNNN	- (C)	3H NN	P NN	- (NN)	- C	C	NN	- CC/CCC
Center Wavelength	Work Mode	Average Power	Peak Power	Average Power P2	Fiber Type	Fiber Sleeve	Fiber Length	Connector Type	
1040~1040nm	F=F Type Blank for S Type	03= 300mW 5= 5 Watts 10= 10 Watts 25= 25 Watts	01=100W 1= 1kW 5=5kW 10=10kW	1= 1W 2= 2W 5=5W Blank for P2=P1	2=PM980Fiber E=PM1060L Fiber Q=20/130 PMDC Fiber R=25/250 PMDC Fiber	B= Bare Fiber L= Loose Tube 2= 2mm Cable 3= 3mm Cable	05=0.5m 10=1.0m 15=1.5m 20=2.0m	N=Without Connector FC/APC=FC/APC Connector LC/PC=LC/PC Connector SC/UFC=SC/UFC Connector	

