

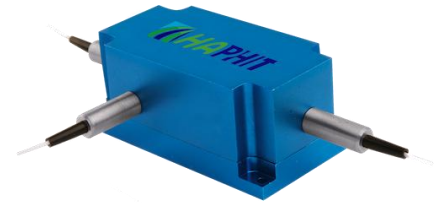
1070nm High Power 3-port PM Optical Circulator

FEATURES

- High Isolation
- Low Insertion Loss
- Epoxy-Free Optical Path
- High Reliability and Stability
- Low Profile Packaging

APPLICATIONS

- Fiber Optic Amplifiers
- Fiber Optic Instruments
- WDM Systems
- Dispersion Compensation
- Light Routing

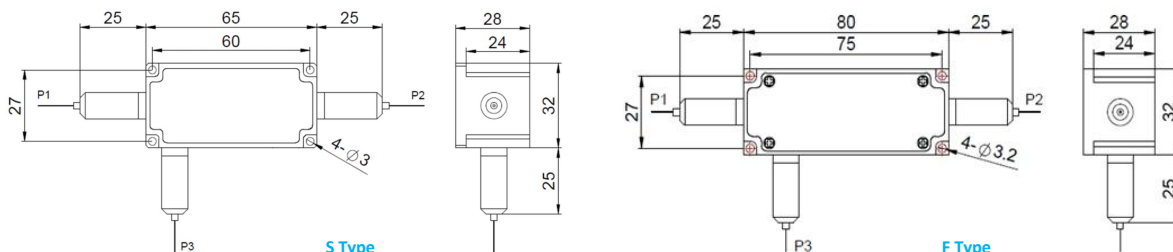


SPECIFICATIONS

Parameter	Unit	Value	
Center Wavelength	nm	1070	
Operating Wavelength Range	nm	+/-10	
Insertion Loss@ 23 °C (1→2 or 2→3)	(Typ.)	dB	0.8
	(Max.)	dB	1.5
Isolation @ 23 °C (3→2 or 2→1)	(Typ.)	dB	25
	(Min.)	dB	22
Work Mode	S Type	-	Can only work in slow axis
	F Type	-	Can work both in slow axis and fast axis
Optical Return Loss	dB	≥45	
Extinction Ratio	dB	18	
Fiber Type	-	PM980 Fiber, PM1060L Fiber (E) or PM1060L-FA Fiber (L) 10/125um PMDC Fiber (O), 15/130um PMDC Fiber (W) 20/130um PMDC Fiber (Q) or 25/250um PMDC Fiber (R)	
Fiber Tensile Load	N	5	
Maximum Optical Power (CW)	W	0.5, 1, 2, 3, 5, 10, 15, 20, 25, 30	
Operating Temperature	°C	0~50	
Storage Temperature	°C	-10~65	

- Note:**
1. Specifications are for device without connectors; Specifications may change without notice.
 2. To add connectors, IL is 0.5dB higher, RL is 5dB lower, ER is 2dB Lower, Connector key is aligned to slow axis.
 3. Only guarantee 1W continuous wave (CW) power thru testing for connectors added.
 4. Devices for higher optical power or with other type fiber or consigned fiber are also available; Devices can only work in the core of Double Cladding (DC) Fiber, Cladding Power must be stripped before connecting the device.
 5. Package size maybe different for different fiber type, optical power, etc.

PACKAGE DIMENSION



ORDERING INFORMATION (PN)

FPCR-	NNNN	- (C)	3HP NN	- (NN)	- C	C	NN	-CC/CCC
<i>Center Wavelength</i>	<i>Work Mode</i>	<i>Optical Power</i>	<i>Optical Power P2</i>	<i>Fiber Type</i>	<i>Fiber Sleeve</i>	<i>Fiber Length</i>	<i>Connector Type</i>	
1070=1070nm	F=F Type <i>Blank for S Type</i>	05= 500mW 1= 1 Watts 5= 5 Watts 20= 20 Watts	1= 1W 2= 2W 5= 5W <i>Blank for P2=P1</i>	2=PM980Fiber E=PM1060L Fiber Q=20/130 PMDC Fiber R=25/250 PMDC Fiber	B= Bare Fiber L= Loose Tube 2= 2mm Cable 3= 3mm Cable	05=0.5m 10=1.0m 15=1.5m 20=2.0m	N=Without Connector FC/APC=FC/APC Connector LC/PC=LC/PC Connector SC/UPC=SC/UPC Connector	