

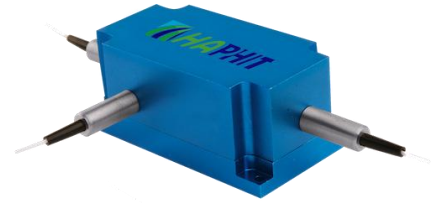
750~810nm 3-port PM Optical Circulator

FEATURES

- High Isolation
- Low Insertion Loss
- Epoxy-Free Optical Path
- High Reliability and Stability
- Low Profile Packaging

APPLICATIONS

- Fiber Optic Amplifiers
- Fiber Optic Instruments
- WDM Systems
- Dispersion Compensation
- Light Routing

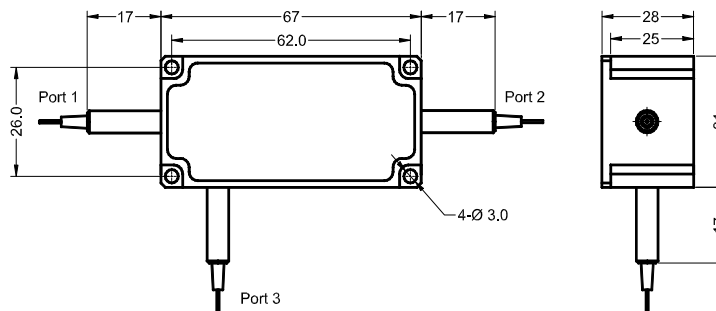


SPECIFICATIONS

Parameter	Unit	Value	
Working Wavelength	nm	750±10, 780±10, 793±10, 808±10	
Insertion Loss@23°C	(Typ.)	1.0	
	(Max.)	1.8	
Isolation@23°C	(Typ.)	19	
	(Min.)	16	
Extinction Ratio	dB	≥16	
Optical Return Loss	dB	≥45	
Cross Talk	dB	≥40	
Work Mode	S Type	-	Can only work in slow axis
	F Type	-	Can work both in Slow and Fast Axis
Fiber Type	-	PM850 Fiber or PM780-HP Fiber	
Fiber Tensile Load	N	5	
Maximum Optical Power (CW)	W	0.3, 0.5, 1, 2, 3, 5, 10, 15, 20	
Operating Temperature	°C	0~50	
Storage Temperature	°C	-10~65	

- Note:**
- Specifications are for device without connectors; Specifications may change without notice.
 - To add connectors, IL is 0.7dB higher, RL is 5dB lower, ER is 2dB Lower, Connector key is aligned to slow axis.
 - Only guarantee 1W continuous wave (CW) power thru testing for connectors added.
 - Devices for higher optical power or with other type fiber or consigned fiber are also available.
 - Package size may be different for different optical power and fiber types

PACKAGE DIMENSION



ORDERING INFORMATION (PN)

FPCR-	NNN	- (C)	3HP	NN	- (NN)	- N	C	NN	- CC/CCC
Center Wavelength	Work Mode	Optical Power	Optical Power P2	Fiber Type	Fiber Sleeve	Fiber Length	Connector Type		
750-750nm	F-F Type	0.3- 300mW	1- 1W	2-PM850 Fiber	B- Bare fiber	0.5-0.5m	N-Without Connector		
780-780nm	Blank for S Type	1- 1 Watts	2- 2W	7-PM780-HP Fiber	L- Loose Tube	10-1.0m	FC/APC-FC/APC Connector		
790-790nm		3- 3 Watts	5-5W		2-2mm Cable	15-1.5m	LC/PC-LC/PC Connector		
808-808nm		10- 10 Watts	Blank for P2=P1		3-3mm Cable	20-2.0m	SC/UPC-SC/UPC Connector		