

1103nm High Power PM Optical Isolator

FEATURES

- High Isolation
- Low Insertion Loss
- Epoxy-Free Optical Path
- High Reliability and Stability
- Low Profile Packaging

APPLICATIONS

- Broadband Systems
- Optical Amplifying Systems
- Telecommunication Networks
- Metro Networks
- CATV Networks

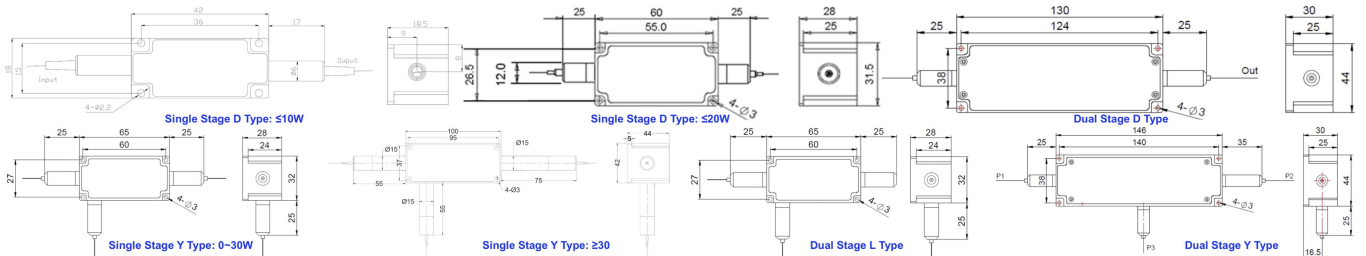


SPECIFICATIONS

Parameter	Unit	Single Stage	Dual Stage D Type	Dual Stage L Type
Center Wavelength (λ_c)	nm	1103		
Operating Wavelength Range	nm	+/-10		
Peak Isolation (Typ.)	dB	28	46	
Min. Isolation (23°C)	dB	22	40	
Typical Insertion Loss (λ_c , 23°C)	dB	1.0	1.3	1.5
Max. Insertion Loss (λ_c , 23°C)	dB	1.6	1.8	
Optical Return Loss (Input/Output)	dB	50/50		
Extinction Ratio (Min.)	dB	18		
Working Mode	S Type	-	Can only work in Slow Axis	
	F Type	-	Can work both in Slow Axis and Fast Axis	
Configuration	-	Standard: 2-Port; Y Type: 3-Port, Backward Power Guide Out		
Fiber Type	Input&Output	-	PM980 Fiber, PM1060L Fiber (E) or PM1060L-FA Fiber (L) 10/125um PMDC Fiber (O), 15/130um PMDC Fiber (W) 20/130um PMDC Fiber (Q) or 25/250um PMDC Fiber (R)	
	3 rd Port (Y Type)	-	Same Fiber or 105/125um MM Fiber	
Fiber Tensile Load	N	5		
Maximum Optical Power (CW)	W	1, 2, 3, 5, 10, 15, 20, 30, 50, 60, 80, 100, 150, 200		
Max. Backward Optical Power (CW)	W	0.3, 0.5, 1, 2, 3, 5, 10		
Operating Temperature	°C	0~50		
Storage Temperature	°C	-20~75		

- Note:**
- Specifications are for device without connectors; Specifications may change without notice.
 - To add connectors, IL is 0.5dB higher, RL is 5dB lower, ER is 2dB Lower, Connector key is aligned to slow axis.
 - Only guarantee 1W continuous wave (CW) power thru testing for connectors added.
 - Suggest to use Y type for >20W Optical Power or continuous backward power of $\geq 2W$.
 - Devices for higher optical power or with other type fiber or consigned fiber are also available; Devices can only work in the core of Double Cladding (DC) Fiber, Cladding Power must be stripped before connecting the device.
 - Package dimensions may be different for different fiber type, configuration and optical power.

PACKAGE DIMENSION



ORDERING INFORMATION (PN)

FPIS-NNNN	- (C)	C	(C)	HP NN	- (NN)	- C	C	NN	- CC/CCC
Center Wavelength	Stage	Type	3 rd Port Fiber	Optical Power	Backward Power	Fiber Type	Fiber Sleeve	Fiber Length	Connector Type
1103=1103nm	D=D Type L=L Type Blank for Single	S= S Type F= F Type	Y= Same Fiber A=105/125um Fiber S=Corr. SM Fiber Blank for Standard	1=1W 3=3W 10=10W 100=100W	05=500mW 1=1W 10=10W Blank for 300mW	2=PM980Fiber E=PM1060L Fiber Q=20/130 PMDC Fiber R=25/250 PMDC Fiber	B= Bare Fiber L= Loose Tube 2= 2mm Cable 3= 3mm Cable	05=0.5m 10=1.0m 15=1.5m 20=2.0m	N=Without Connector FC/APC=FC/APC Connector LC/PC=LC/PC Connector SC/UPC=SC/UPC Connector

