

## 750~860nm Pump Laser Protector with Isolator for Pulse Power

### FEATURES

- High Isolation
- Low Insertion Loss
- Epoxy-Free Optical Path
- High Reliability and Stability
- Low Profile Packaging

### APPLICATIONS

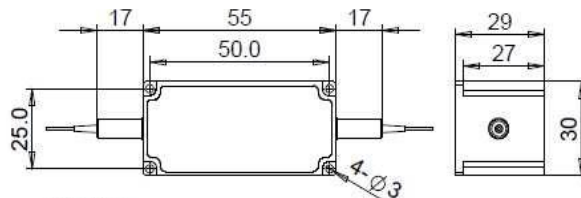
- Broadband Systems
- Optical Amplifying Systems
- Telecommunication Networks
- Metro Networks
- CATV Networks

### SPECIFICATIONS

Parameters	Unit	Standard	High Signal Isolation
Pump Laser Wavelength	nm	750±10, 780±10, 793±10, 808±10, 830±10, 850±10	
Blocking Signal Wavelength	Type 5	nm	1500~1620
	Type 2	nm	1020~1120&1500~1620
	Type 8	nm	880~1100
	Type 9	nm	1900~2070
Pump Insertion Loss@23°C	dB	≤1.5	≤1.8
Backward Pump Isolation@23°C	dB	≥22	
Backward Signal Attenuation	dB	≥25	≥45
Configuration	D Type	-	2-port
	Y Type	-	3-port, (Backward Signal/Pump Guide Out)
Return Loss	dB	≥50	
PDL	dB	≤0.2	
Fiber Type	Input&Output	-	HI780 Fiber or 780-HP Fiber
	3 <sup>rd</sup> Port (Only for Y Type)	-	Same Fiber or 105/125um MM Fiber
Fiber Tensile Load	N	5	
Max. Average Power (Pump+Signal)	W	0.3, 0.5, 1, 2, 3, 5, 10, 15, 20	
Max. Peak Power for Pulse	kW	0.1, 1, 2, 3, 5, 10, 15, 20	
Max. Backward Signal/Pump Average Power	W	0.3, 0.5, 1, 2, 3, 5, 10	
Operating Temperature	°C	0~50	
Storage Temperature	°C	-20~75	

- Note:**
- Specifications are for device without connectors; Specifications may change without notice.
  - To add connectors, IL is 0.7dB higher, RL is 5dB lower.
  - Only guarantee 1W continuous wave (CW) power thru testing for connectors added.
  - Devices for higher optical power or with other type fiber or consigned fiber are also available; Devices can only work in the core of Double Cladding (DC) Fiber, Cladding Power must be stripped before connecting the device.
  - Suggest to use Y/X type if blocked optical power is >1W.
  - Package size may be different for different optical power, fiber type and configurations.

### DIMENSION DRAWING



### ORDERING INFORMATION (PN)

FSPI-NNN	- N	(C)	(C)	(C)	-H NN	P NN	-(NN)	-(C)	C	NN	- CC/CCC
Center Wavelength	Signal Type	Signal Isolation	B.Signal Fiber	B.Pump Guide Out	Optical Power	Peak Power	B.Signal/Pump Power	Fiber Type	Fiber Sleeve	Fiber Length	Connector Type
780-780nm	9-Type 9	I-High Isolation	Y- Same Fiber	P- Yes	05-500mW	01-100W	05- 500mW	7-780HP Fiber	B- Bare fiber	05-0.5m	N-Without Connector
793-793nm	5-Type 5	Blank for Standard	A=105/125um Fiber	Blank for	1- 1W	1- 1kW	1- 1W	Blank for HI780 Fiber	L- Loose Tube	10-1.0m	FC/APC=FC/APC Connector
808- 808nm	2-Type 2		Blank for D Type	D Type or No	5- 5W	5- 5kW	5- 5W		2- 2mm Cable	15-1.5m	LC/PC=LC/PC Connector
830- 830nm	8-Type 8				10-10W	10-10kW	Blank for 300mW		3- 3mm Cable	20-2.0m	SC/UP=SC/UPC Connector

